

Shutewater Orchard, Taunton - £875 PCM



KEY FEATURES

- **WELL PRESENTED, SPACIOUS TWO BEDROOM TERRACED HOUSE IN TAUNTON**
- SOUGHT AFTER BISHOPS HULL AREA
- GOOD SIZED LIVING ROOM / DINER
- MODERN KITCHEN
- DOWNSTAIRS WC
- TWO BEDROOMS, ONE WITH EN-SUITE
- GAS CENTRAL HEATING AND DOUBLE GLAZED
- DRIVEWAY WITH PARKING FOR TWO CARS
- HOLDING DEPOSIT FOR APPLICATION = £201.92
- CHECK-IN DEPOSIT = £1,009.62
- GROSS INCOME REQUIREMENT £30,000
- **AVAILABLE NOW**

Driving distances to....Town Centre- 1.9Miles Train Station- 3.0Miles M5 J25- 5.1Miles

Bennett Residential have just received instructions to let this premium quality two bedroom, spacious terraced house in the sought after area of Bishops Hull in Taunton. Situated centrally to the county town of Somerset. Taunton offers quick and easy access to the A38, A303, A358 and M5, which provide links to Bristol, Exeter, London and the central motorway network. There is also a direct mainline link from Taunton to London – Paddington.

The accommodation comprises of: On the ground floor, a good sized living room/diner with french doors out to the garden, a modern kitchen & downstairs WC. On the first floor there are two bedrooms, one with en-suite and a further modern bathroom. Outside, the property has a garden with a shed and 2 x allocated off road parking spaces.

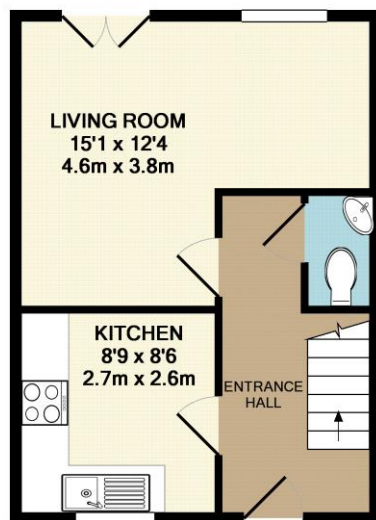
Available to let unfurnished on an Assured Shorthold Tenancy for an initial six-month period at a rent of £875 per calendar month.

- Pets: No.
- Smokers: No
- Benefits: Considered with a suitable guarantor
- Children: No
- Sharers: 2 professional sharers only

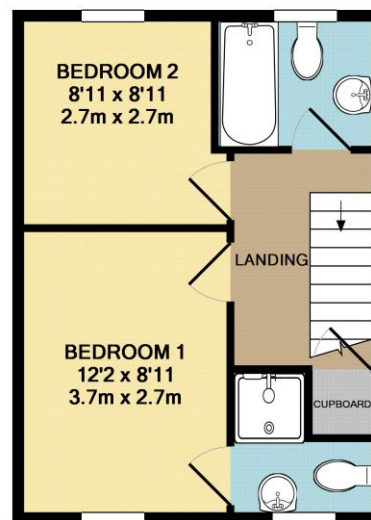
Council Tax Band : B

Energy Rating: B

AVAILABLE: **Now**



GROUND FLOOR
 APPROX. FLOOR
 AREA 317 SQ.FT.
 (29.4 SQ.M.)



1ST FLOOR
 APPROX. FLOOR
 AREA 317 SQ.FT.
 (29.4 SQ.M.)

TOTAL APPROX. FLOOR AREA 633 SQ.FT. (58.8 SQ.M.)

Whilst every attempt has been made to ensure the accuracy of the floor plan contained here, measurements of doors, windows, rooms and any other items are approximate and no responsibility is taken for any error, omission, or mis-statement. This plan is for illustrative purposes only and should be used as such by any prospective purchaser. The services, systems and appliances shown have not been tested and no guarantee as to their operability or efficiency can be given

Made with Metronix ©2012



